

ADDENDUM – REPLACING THE WATCH BATTERY

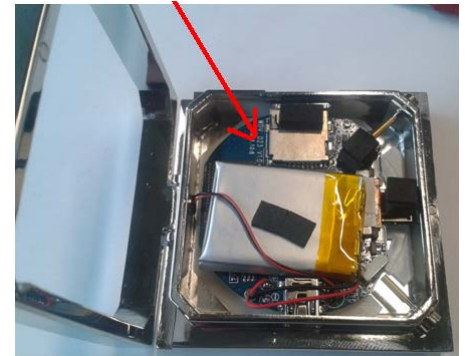
The CAMCOLVC11 camera has two batteries:

- The battery for the camera is rechargeable with the included USB cable (see user manual).
- The battery for the clock is a button cell that can be replaced. This battery for the watch is located under the printed circuit board of the camera. You can replace the battery as follows:

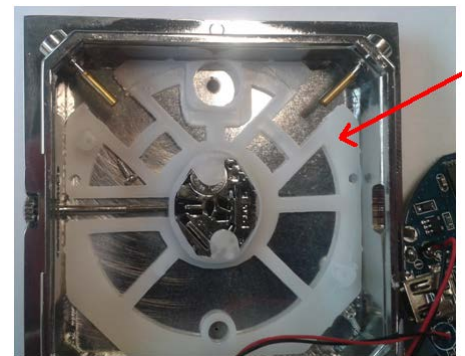
- 1 Remove the back cover.



- 2 Remove the PCB of camera. Remove the two screws on PCB.



- 3 Remove the plastic watch holder.



- 4 Remove the battery, and replace it with type V377.

