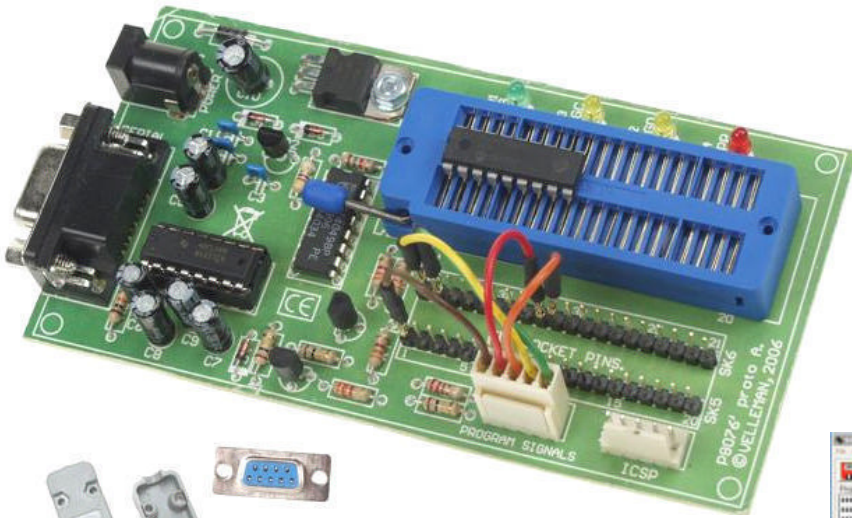




PIC™ PROGRAMMER BOARD

K8076



This board can program a wide range of Microchip® PIC™ microcontrollers.

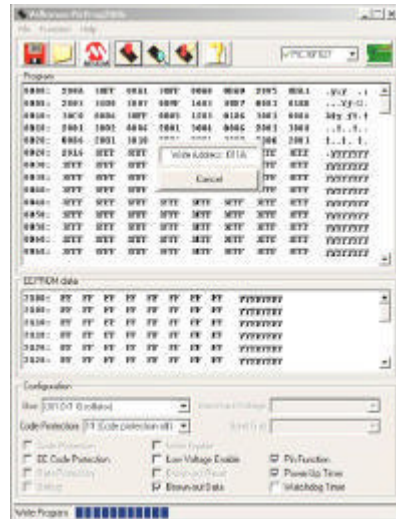
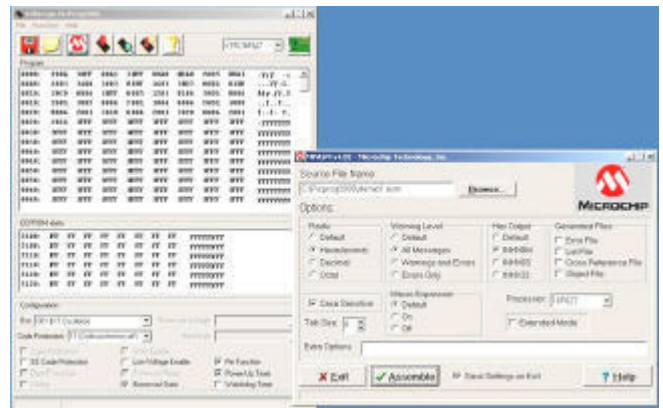
Regularly updated device list, through our web site.

Onboard configurable 40 pin. ZIF socket!

Easy to use programming PICprog2006™ software included.



SUBD connector set included



40 PIN ZIF SOCKET

Specifications:

- Power supply: 15V DC, min. 300mA, adapter (Ex. [PS1508](#))
- Dimensions: 132x65x20mm
- Serial port connector: 9 p. SUBD.
- On board "In Circuit Serial Programming" connector.
- Minimum system requirements:
 - IBM Compatible PC, Pentium or better
 - Windows™ 98/ME/NT/2000/XP
 - CDROM drive
 - Free serial RS232 port required.

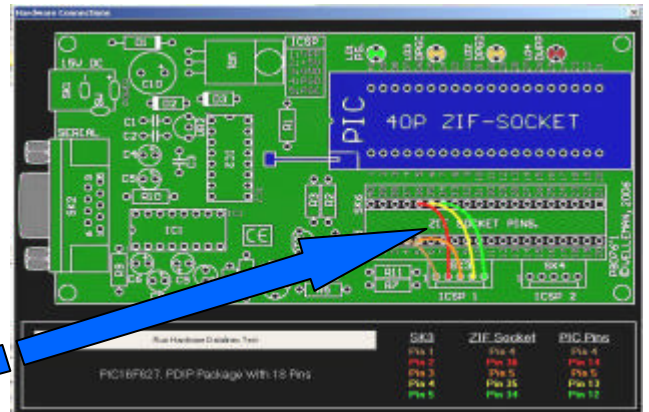
OPTION: USB connection possible with "PCUSB6" conversion cable set:



Currently supported controllers

- PIC10F200
 - PIC12C508A, PIC12CE518
 - PIC12F629, PIC12F675
 - PIC16F54
 - PIC16F84A
 - PIC16F870, PIC16F871, PIC16F872, PIC16F873*, PIC16F874*
 - PIC16F876, PIC16F877*
 - PIC16F627, PIC16F627A, PIC16F628, PIC16F628A
 - PIC16F648A* PIC16F630, PIC16F676
- (* UNDER TEST)

EASY DEVICE SELECTION USING PATCH JUMPERS



(*) PIC and Microchip are registered trade marks