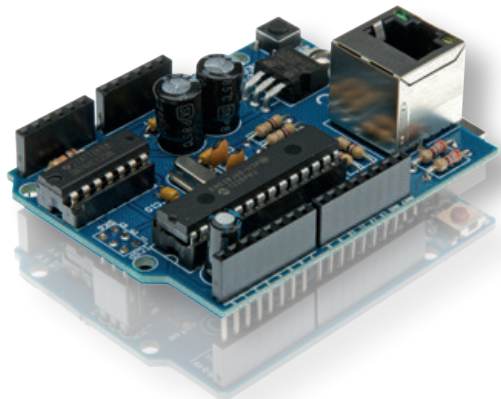


# KA04

ILLUSTRATED ASSEMBLY MANUAL HKA04IP1

## Ethernet shield for Arduino®



**Configure your Arduino™ as a simple web server or let it get data from the worldwide web.**

### Features

- For use with Arduino Uno™, Arduino Mega™
- Based on Microchip ENC28J60
- IEEE 802.3 compatible Ethernet controller
- Integrated MAC & 10BASE-T PHY
- SPI interface
- With RJ45 connector

### Specifications

- Max. clock speed: 20MHz
- Transmit/receive buffer: 8kB
- Dimensions: 68 x 53mm / 2.67 x 2.08"



**velleman projects** | Velleman Projects | All about the various open developments: Kits, Modules, Instruments and Home Automation | Webel Kingdom - English (UK) | Change

Search product

Search Product


Navigation

- Main page
- Products
- Sales outlets
- Support
- Publications
- Jobs
- About us

News

**NEW MK53 LED CUBE**  
CubeComposer software available for download here!  
Posted on 06-08-12  
[Read more...](#)

**Velleman Projects Newsletter**  
Are you an electronic enthusiast or simply interested in our kits, modules, modules and instruments? Subscribe to our Newsletter and receive every month the latest news, new products & updates on Velleman Projects.  
You will receive an email. Click on the link in that email to confirm your subscription.  
Email:



Advertisements

NEWKIT / NEWKIT Android Application



Subscribing our newsletter?, visit [www.vellemanprojects.eu](http://www.vellemanprojects.eu)



Participate our Velleman Projects Forum

**velleman projects** | INSTRUMENTS | NEWKIT SYSTEM KIT | Support Forum (ENFR) | vellemanprojects.eu

Support Forum (ENFR)

Home Automation (12) | Data Acquis (10) | All threads (147)

Thread	Topics	Posts	Last visit
<b>Forum rules, Regulations de base</b> Apr 17 '12 at 07:48 AM Moderation: velleman (Support)	1	1	Wed Sep 26, 2012 02:45 AM <a href="#">View Thread</a>
<b>Forum Administration</b> Apr 17 '12 at 07:48 AM Moderation: velleman (Support)	1	1	Fri May 18, 2012 02:37 AM <a href="#">View Thread</a>
<b>Velleman Data Acquisition</b> Search engine for our new Velleman Home Automation System identified. Moderation: velleman (Support)	674	2775	Fri May 18, 2012 02:36 AM <a href="#">View Thread</a>
<b>Kit (Outstanding projects - Products &amp; modules)</b>			
<b>General</b> For other topics, general tips and tricks, how-tos. Moderation: velleman (Support)	275	635	Wed Sep 26, 2012 02:37 AM <a href="#">View Thread</a>
<b>AppleKit &amp; Windows</b> All Apple related projects, anything, video, anything. Moderation: velleman (Support)	607	2465	Fri May 18, 2012 02:36 AM <a href="#">View Thread</a>
<b>Kit: RaspberryPi</b> All projects that are connected to the Pi: how interface cards. Moderation: velleman (Support)	5328	8568	Fri May 18, 2012 02:36 AM <a href="#">View Thread</a>
<b>Home Automation</b> How to use our HomeKit programming, software, etc. Moderation: velleman (Support)	467	1594	Fri May 18, 2012 02:36 AM <a href="#">View Thread</a>
<b>Home Automation</b> All about our HomeKit projects from regular users to programmable bricks. Moderation: velleman (Support)	283	936	Fri May 18, 2012 02:36 AM <a href="#">View Thread</a>
<b>Home Projects</b> Unofficial related projects, from light projects to remote control. Moderation: velleman (Support)	624	6265	Fri May 18, 2012 02:36 AM <a href="#">View Thread</a>



**Velleman N.V.**  
**Legen Heirweg 33**  
**9890 Gavere**  
**(België)**

## assembly hints

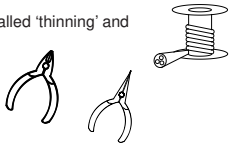
### 1. Assembly (Skipping this can lead to troubles !)

Ok, so we have your attention. These hints will help you to make this project successful. Read them carefully.



#### 1.1 Make sure you have the right tools:

- A good quality soldering iron (25-40W) with a small tip.
- Wipe it often on a wet sponge or cloth, to keep it clean; then apply solder to the tip, to give it a wet look. This is called 'thinning' and will protect the tip, and enables you to make good connections. When solder rolls off the tip, it needs cleaning.
- Thin raisin-core solder. Do not use any flux or grease.
- A diagonal cutter to trim excess wires. To avoid injury when cutting excess leads, hold the lead so they cannot fly towards the eyes.
- Needle nose pliers, for bending leads, or to hold components in place.
- Small blade and Phillips screwdrivers. A basic range is fine.



For some projects, a basic multi-meter is required, or might be handy



#### 1.2 Assembly Hints :

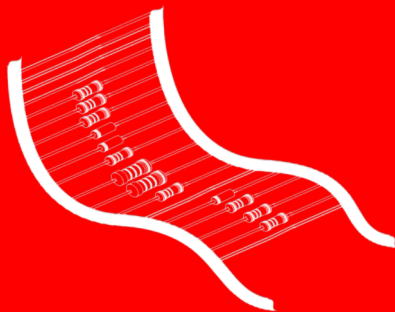
- Make sure the skill level matches your experience, to avoid disappointments.
- Follow the instructions carefully. Read and understand the entire step before you perform each operation.
- Perform the assembly in the correct order as stated in this manual
- Position all parts on the PCB (Printed Circuit Board) as shown on the drawings.
- Values on the circuit diagram are subject to changes, the values in this assembly guide are correct\*
- Use the check-boxes to mark your progress.
- Please read the included information on safety and customer service

\* Typographical inaccuracies excluded. Always look for possible last minute manual updates, indicated as 'NOTE' on a separate leaflet.

#### 1.3 Soldering Hints :

1. Mount the component against the PCB surface and carefully solder the leads
2. Make sure the solder joints are cone-shaped and shiny
3. Trim excess leads as close as possible to the solder joint





REMOVE THEM FROM THE TAPE ONE AT A TIME !

Included in this kit

**2. RESISTOR**

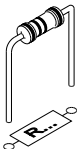
R1 : 120 (1 - 2 - 1 - B)

COLOUR	COLOUR NAME	1ST DIGIT/ STRIPE	2ND DIGIT/ STRIPE	3RD DIGIT/ STRIPE	MULTIPLIER STRIPE	TOL 4TH
Black	BLACK	0	0	0	x1	1%
Brown	BROWN	1	1	1	x10	
Red	RED	2	2	2	x100	
Orange	ORANGE	3	3	3	x1.000	
Yellow	YELLOW	4	4	4	x10.000	
Green	GREEN	5	5	5	x100.000	
Violet	VIOLET	6	6	6	x1.000.000	

**DO NOT BLINDLY FOLLOW THE ORDER OF THE COMPONENTS ONTO THE TAPE. ALWAYS CHECK THEIR VALUE ON THE PARTS LIST!**

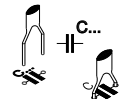
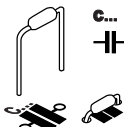
## 1 CONSTRUCTION

### 1 Resistors



- R1: 47 (4-7-0-B)
- R2: 47 (4-7-0-B)
- R3: 18 (1-8-0-B)
- R4: 47 (4-7-0-B)
- R5: 47 (4-7-0-B)
- R6: 270 (2-7-1-B)
- R7: 270 (2-7-1-B)
- R8: 2K7 (2-7-2-B)
- R9: 10K (1-0-3-B)
- R10: 10K (1-0-3-B)
- R11: 10K (1-0-3-B)

### 2 Ceramic capacitors



- C1: 100nF (104)
- C2: 100nF (104)
- C3: 100nF (104)
- C4: 100nF (104)
- C10: 100nF (104)

- C7: 15pF (15)
- C8: 15pF (15)

### 3 Crystal



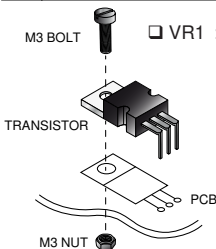
X1 : 25MHz

### 4 Push button



SW1 : Reset

### 5 Voltage regulator



### 6 IC socket



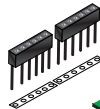
IC1 : 28p



IC1 : 14p

Watch the position of the notch!

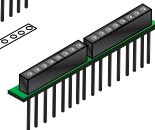
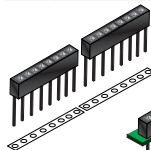
### 7 Female header

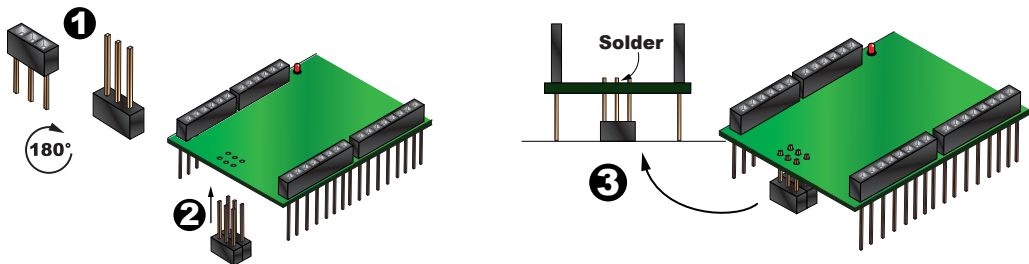


2 x 6p



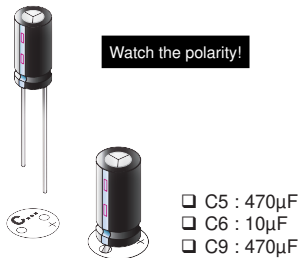
Do not cut the connector pins!



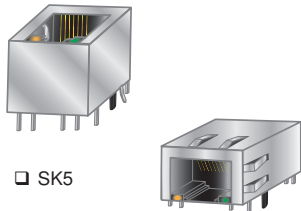


□ SK6: 2 x 3p

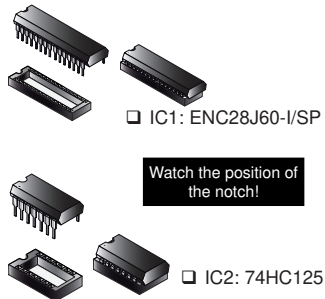
## 8 Electrolytic capacitors



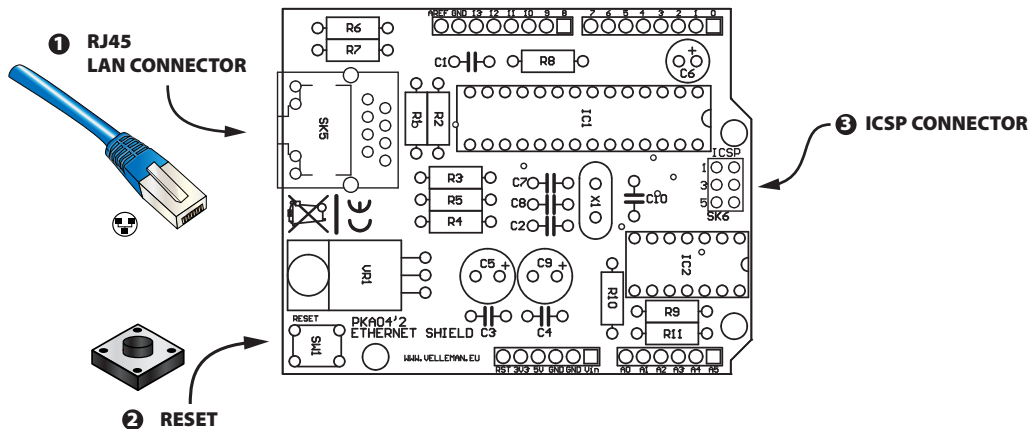
## 9 LAN connector



## 10 IC

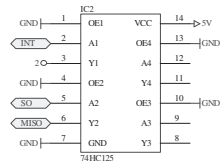
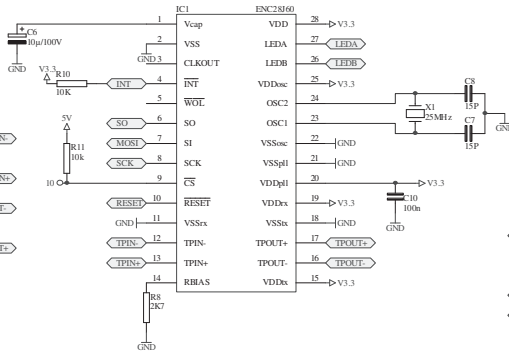
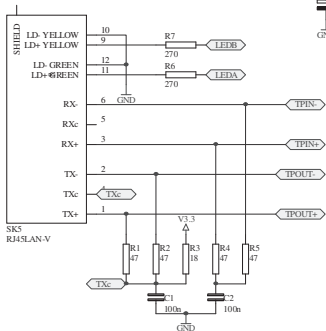
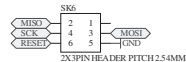
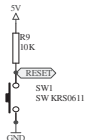
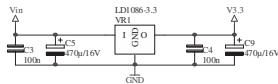
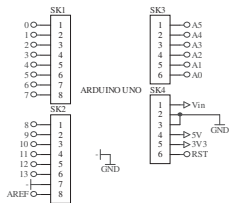


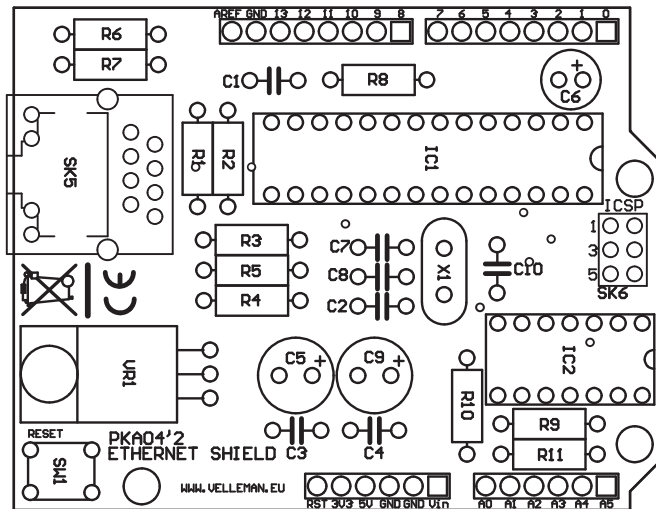
## II CONNECTION DIAGRAM



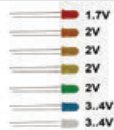
DOWNLOAD SAMPLE CODE FROM KA04 PAGE ON [WWW.VELLEMAN.BE](http://WWW.VELLEMAN.BE)



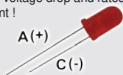




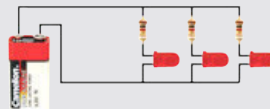
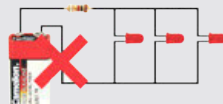
# Leds and how to use them



Leds feature a specific voltage drop, depending on type and colour. Check the datasheet for exact voltage drop and rated current !



Never connect leds in parallel



## How to Calculate the series resistor:

Example: operate a red led (1.7V) on a 9Vdc source.

Required led current for full brightness: 5mA (this can be found in the datasheet of the led)

$$\frac{\text{Supply voltage (V) - led voltage (V)}}{\text{required current (A)}} = \text{series resistance (ohms)}$$



$$\frac{9V - 1.7V}{0.005A} = 1460 \text{ ohm}$$

closest value :  
use a 1k5 resistor

Required resistor power handling=  
voltage over resistor x current passed trough resistor

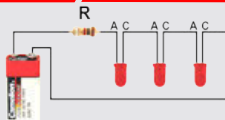


$$(9V - 1.7V) \times 0.005A = 0.036W$$

a standard 1/4W resistor  
will do the job

## LEDs in series:

Example: 3 x red led (1.7V) on 9V battery  
Required led current for full brightness: 5mA  
(this can be found in the datasheet of the led)



$$\frac{\text{Supply voltage (V) - (number of leds x led voltage (V))}}{\text{required current (A)}} = \text{series resistance (ohms)}$$

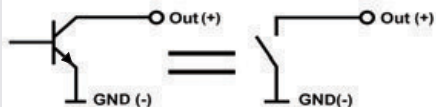


$$\frac{9V - (3 \times 1.7V)}{0.005A} = 780 \text{ ohm}$$

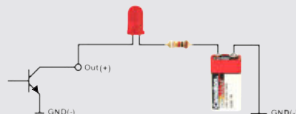
use an  
820 ohm resistor

## open collector outputs

An open collector output can be compared to a switch which switches to ground when operated



Example: How to switch an LED by means of an open collector output





The new Velleman Projects catalogue is  
now available. Download your copy here:  
[www.vellemanprojects.eu](http://www.vellemanprojects.eu)



Modifications and typographical errors reserved - © Velleman nv. HKA04'IP (Rev.1)  
Velleman NV, Legen Heirweg 33 - 9890 Gavere.