

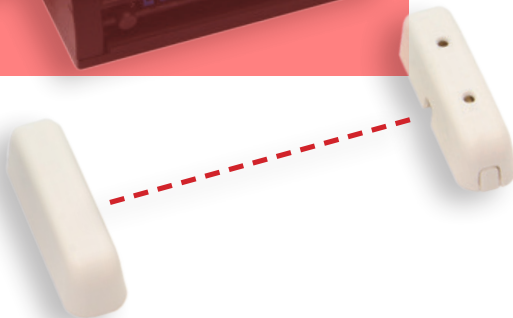
# K8093

ILLUSTRATED ASSEMBLY MANUAL K8093IP-1

**Remote controlled  
home alarm**



velleman®  
projects





Search product

Search Product

Navigation

- Main page
- Products
- Sales outlets
- Support
- Publications
- Jobs
- About us

News

NEW HX193 LED CUBE

Cubeometer software  
available for download  
[more]

Posted on 04-09-12

[Read more...](#)

## Velleman Projects Newsletter

Are you an electronic enthusiastic or simply interested in our kits, modules, modules and instruments?

Subscribe to our Newsletter and receive every month the latest news, new products & updates on Velleman Projects.

You will receive an email. Click on the link in that email to confirm your subscription.

Email:



Do you want to unsubscribe? Click on the 'unsubscribe' link in the footer of the last received newsletter from Velleman Projects.

- velleman.eu
- support.velleman.eu
- panel.velleman.eu
- velleman.projects.uk.com
- velleman.eu
- forum.velleman.eu

Advertisements



Subscribing our newsletter?, visit [www.vellemanprojects.eu](http://www.vellemanprojects.eu)

Support Forum

Help Search

View unanswered posts | View active topics

It is currently 04 Sep 16, 12:02:00 PM

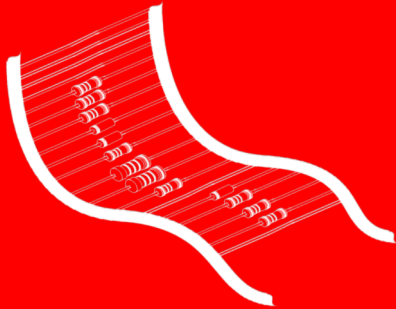
Advanced

98 Topics, 604 Posts

	Topics	Topics	Posts	Last post
<b>General</b>				
French-Italian - Españoles de French	1	1	1	Wed Sep 10, 2014 0:46 AM [more]
Forum Administration	1	1	1	Fri May 14, 2015 1:07 AM [more]
<b>Modules</b>				
Velleman-Module Administration	604	2572	1	Tue Sep 15, 2012 0:10 AM [more]
<b>Kits (including projects - Projects &amp; modules)</b>				
General	233	630	1	Wed Sep 10, 2012 0:27 AM [more]
Audio-Kit-Projects	607	3060	1	Fri May 14, 2015 0:10 AM [more]
Kit - Keyboard-Projects	1338	6638	1	Fri May 14, 2015 0:10 AM [more]
Microcontroller-Programmer - Experimenting-Projects	607	3104	1	Tue Sep 11, 2012 0:27 AM [more]
Nano-Kit-Projects	251	801	1	Fri May 11, 2012 0:40 AM [more]
Home-Projects	634	3203	1	Fri May 14, 2015 12:00 AM [more]



Participate our Velleman Projects Forum



REMOVE THEM FROM THE TAPE ONE AT A TIME !

Included in this kit

**2. RESISTOR**

R1: 120 (1-2-1-B)

COLOUR	COLOUR NAME	1ST DIGIT/ STRIPE	2ND DIGIT/ STRIPE	3RD DIGIT/ STRIPE	MULTIPLIER STRIPE	TOLR 4TH
Black	BLACK	0	0	0	x1	1%
Brown	BROWN	1	1	1	x10	
Red	RED	2	2	2	x100	
Orange	ORANGE	3	3	3	x1.000	
Yellow	YELLOW	4	4	4	x10.000	
Green	GREEN	5	5	5	x100.000	
Blue	BLUE	6	6	6	x1.000.000	

**DO NOT BLINDLY FOLLOW THE ORDER OF THE COMPONENTS ONTO THE TAPE. ALWAYS CHECK THEIR VALUE ON THE PARTS LIST!**

## assembly hints

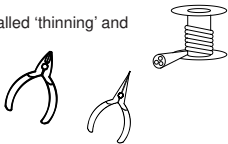
### 1. Assembly (Skipping this can lead to troubles !)

Ok, so we have your attention. These hints will help you to make this project successful. Read them carefully.



#### 1.1 Make sure you have the right tools:

- A good quality soldering iron (25-40W) with a small tip.
- Wipe it often on a wet sponge or cloth, to keep it clean; then apply solder to the tip, to give it a wet look. This is called 'thinning' and will protect the tip, and enables you to make good connections. When solder rolls off the tip, it needs cleaning.
- Thin rosin-core solder. Do not use any flux or grease.
- A diagonal cutter to trim excess wires. To avoid injury when cutting excess leads, hold the lead so they cannot fly towards the eyes.
- Needle nose pliers, for bending leads, or to hold components in place.
- Small blade and Phillips screwdrivers. A basic range is fine.



ⓘ For some projects, a basic multi-meter is required, or might be handy



#### 1.2 Assembly Hints :

- Make sure the skill level matches your experience, to avoid disappointments.
- Follow the instructions carefully. Read and understand the entire step before you perform each operation.
- Perform the assembly in the correct order as stated in this manual
- Position all parts on the PCB (Printed Circuit Board) as shown on the drawings.
- Values on the circuit diagram are subject to changes, the values in this assembly guide are correct\*
- Use the check-boxes to mark your progress.
- Please read the included information on safety and customer service

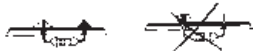
\* Typographical inaccuracies excluded. Always look for possible last minute manual updates, indicated as 'NOTE' on a separate leaflet.

#### 1.3 Soldering Hints :

1. Mount the component against the PCB surface and carefully solder the leads



2. Make sure the solder joints are cone-shaped and shiny



3. Trim excess leads as close as possible to the solder joint



## features

- can store up to 4 remote controls (FIFO)
- chime function
- built-in pre-alarm
- always armed after power outage
- the built-in relay can switch a regular alarm (not included) (3 A 125 VAC) after 20 s pre-alarm
- arm time:
  - slow with indication: if the door is open or closed (time to leave the room)
  - quickly
- magnetic door contact included

## Specifications

- power supply: 12V DC
- consumption:
  - armed: 20 mA
  - alarm relay powered: 50 mA
- relay: 3 A - 125 VAC
- frequency: 433.92 MHz
- 32-bit code technology
- more than 1.000.000.000 unique codes
- code can easily be changed for safety purposes
- transmitter: R&TTE compliant (ETS 300-220) \*
- open field range of up to 30 m possible
- external antenna wire
- receiver dimensions: 108 x 102 x 45 mm / 4.25 x 4 x 1.77"

\* ETS 300 -220:only for EU countries

### Compatible remotes (not included):



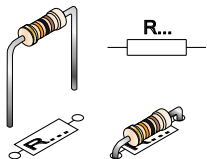
VM166T: 2-channel transmitter with LED light



VM130T: 2-channel RF remote control transmitter

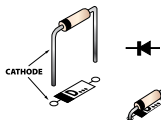
# I. CONSTRUCTION

## 1 Resistors



- R1 : 47K (4 - 7 - 3 - B)
- R2 : 560 (5 - 6 - 1 - B)
- R3 : 560 (5 - 6 - 1 - B)
- R4 : 47K (4 - 7 - 3 - B)
- R5 : 560 (5 - 6 - 1 - B)
- R6 : 1K (1 - 0 - 2 - B)
- R7 : 10K (1 - 0 - 3 - B)
- R8 : 10K (1 - 0 - 3 - B)
- R9 : 2K2 (2 - 2 - 2 - B)
- R10 : 560 (5 - 6 - 1 - B)

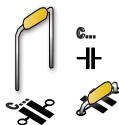
## 2 Diodes



Watch the polarity!

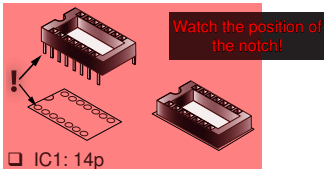
- D1 : 1N4148
- D2 : 1N4148

## 3 Ceramic Capacitors



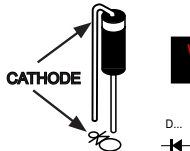
- C1 : 100nF (104)
- C2 : 100nF (104)
- C3 : 100nF (104)

## 4 IC socket



IC1: 14p

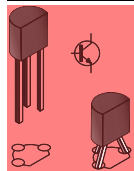
## 5 Vertical diode



Watch the polarity!

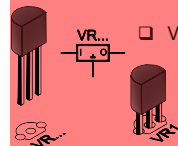
- D2 : 1N4007

## 6 Transistors



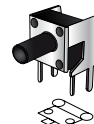
- T1 : BC547
- T2 : BC547
- T3 : BC547

## 7 Voltage regulator



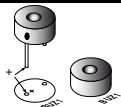
- VR1 : UA78L05

## 8 Push button



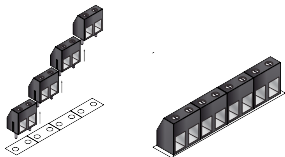
- SW1:LEARN BUTTON

## 9 Sounder



□ BUZ1

## 10 Terminal blocks



- SK2 : 2p (Relais)
  - SK3 : 2p (N.O. / N.C)
  - SK4 : 2p (COM / -)
  - SK5 : 2p (power supply)
- } Output

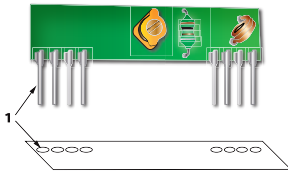
## 11 Electrolytic capacitors



Watch the polarity!

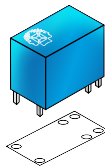
- C4 : 470 $\mu$ F
- C5 : 10 $\mu$ F

## 12 RF-receiver



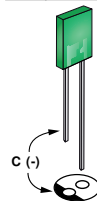
□ RX1 : RX433N

## 13 Relay



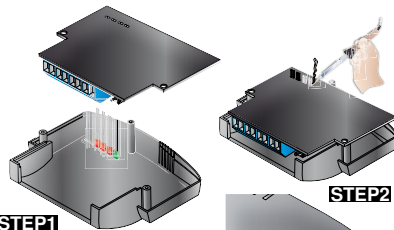
□ RY1

## 14 LED's



Watch the polarity!

- LD1: Red (power)
- LD2: Red (status)
- LD3: Red (alarm)
- LD4: Green (relais)

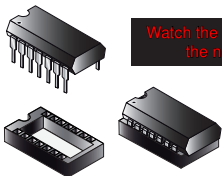


**STEP1:** Place the LEDs together with the circuit board in the upper part of the housing.

**STEP2:** Solder one lead of each led and check the position. If OK, solder the second lead.

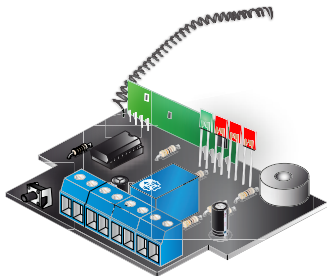
## 15 IC

Watch the position of the notch!

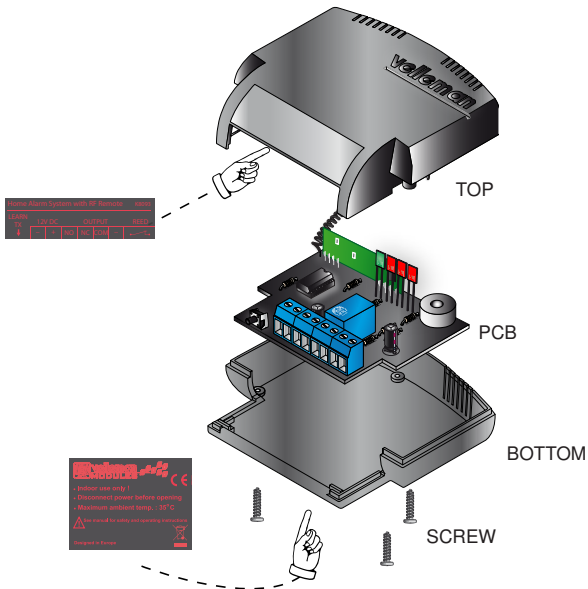


□ IC1: VK8093  
(programmed PIC16F1503-I/P)

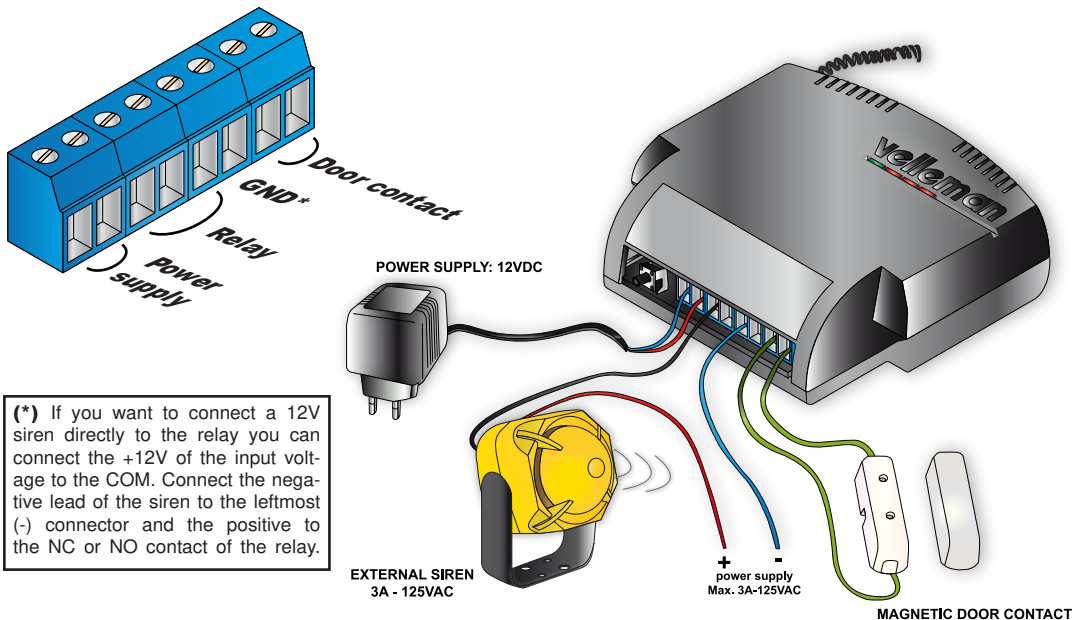
## 16 Antenna



## II. ASSEMBLY



### III. CONNECTION DIAGRAM



(\*) If you want to connect a 12V siren directly to the relay you can connect the +12V of the input voltage to the COM. Connect the negative lead of the siren to the leftmost (-) connector and the positive to the NC or NO contact of the relay.

## IV. ARMING THE UNIT

Out of the box no remotes are assigned for safety reasons. When the unit powers up it is always armed!  
Unit is capable of storing 4 remotes, FIFO.

The stored remotes can be cleared from memory by holding the LEARN button while powering up, The unit will beep 10 times (fast) to indicate the erasing process.

### STATUS INDICATION (LD3)

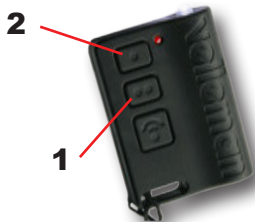


### LEARNING A REMOTE:

1. Press the "Learn"-button once, the status LED light continuous. The unit is ready for learning a remote (there is a timeout!).
2. Hold the 2 buttons of the remote pressed. Release the buttons when the status LED turns off , the remote is learned.

### REMOTE CONTROL:

1. DISARM
2. ARM



### How to arm?

There are 3 methodes for arming your unit:

- Arming with open door
- Quickly arming with open door
- Arming with closed door

#### Arming with open door:

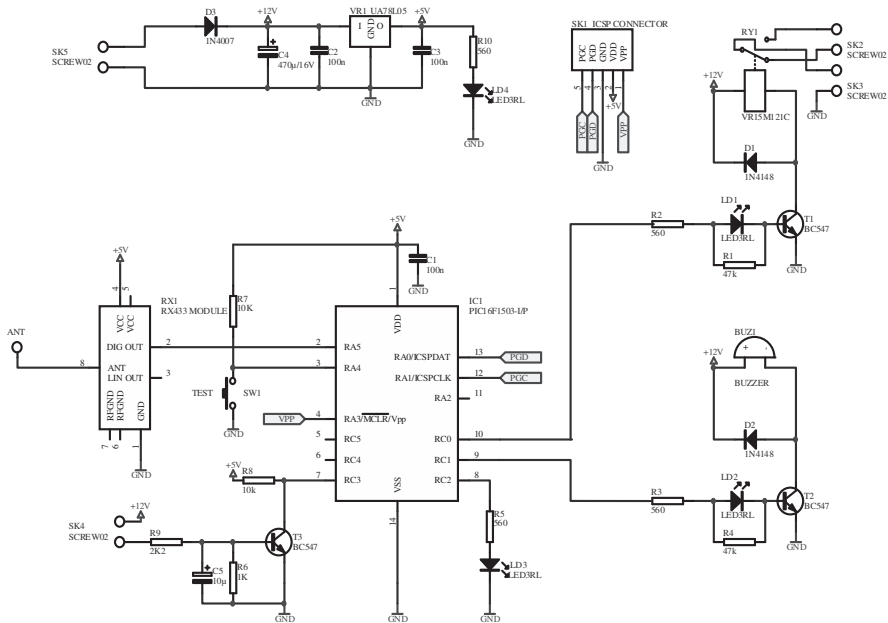
*When the door is open, the unit beeps for prox. 20seconds before actually arming. Closing the door will the unit beeps faster. After the delay periode the unit is armed.*

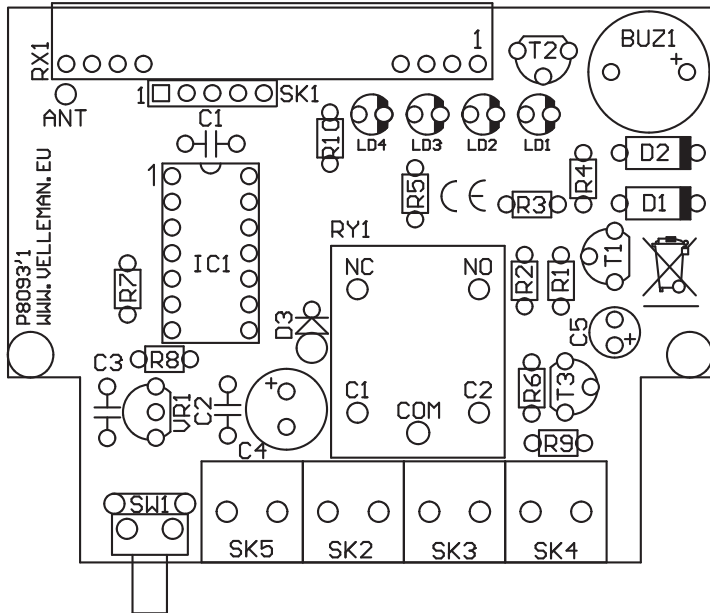
#### Quickly arming with open door:

*During the arming delay periode of 20 seconds you can arm instant by pressing the arm button again (door must be closed!).*

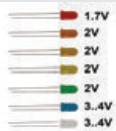
#### Arming with closed door:

*At closed door and unarmed unit you can arm it by holding the alarm button pressed, there is no arming delay time of 20 seconds.*

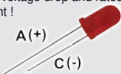




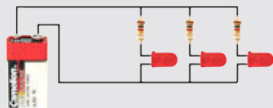
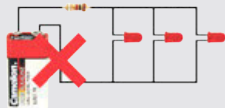
# Leds and how to use them



Leds feature a specific voltage drop, depending on type and colour. Check the datasheet for exact voltage drop and rated current !



Never connect leds in parallel



## How to Calculate the series resistor:

Example: operate a red led (1.7V) on a 9Vdc source.

Required led current for full brightness: 5mA (this can be found in the datasheet of the led)

$$\frac{\text{Supply voltage (V) - led voltage (V)}}{\text{required current (A)}} = \text{series resistance (ohms)}$$



$$\frac{9V - 1.7V}{0.005A} = 1460 \text{ ohm}$$

closest value :  
use a 1k5 resistor

Required resistor power handling=  
voltage over resistor x current passed trough resistor

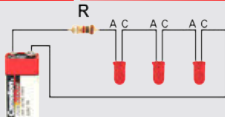


$$(9V - 1.7V) \times 0.005A = 0.036W$$

a standard 1/4W resistor  
will do the job

## LEDs in series:

Example: 3 x red led (1.7V) on 9V battery  
Required led current for full brightness: 5mA  
(this can be found in the datasheet of the led)



$$\frac{\text{Supply voltage (V) - (number of leds x led voltage (V))}}{\text{required current (A)}} = \text{series resistance (ohms)}$$

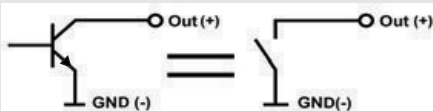


$$\frac{9V - (3 \times 1.7V)}{0.005A} = 780 \text{ ohm}$$

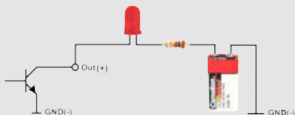
use an  
820 ohm resistor

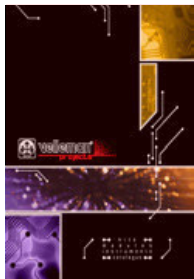
## open collector outputs

An open collector output can be compared to a switch which switches to ground when operated



Example: How to switch an LED by means of an open collector output





The new Velleman Projects catalogue is now available. Download your copy here:

[www.vellemanprojects.eu](http://www.vellemanprojects.eu)



Modifications and typographical errors reserved - © Velleman nv. H8093'IP  
Velleman NV, Legen Heirweg 33 - 9890 Gavere.