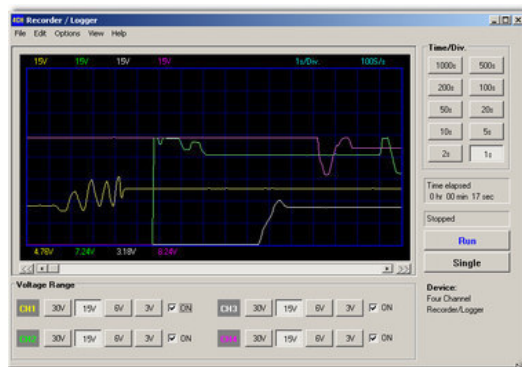
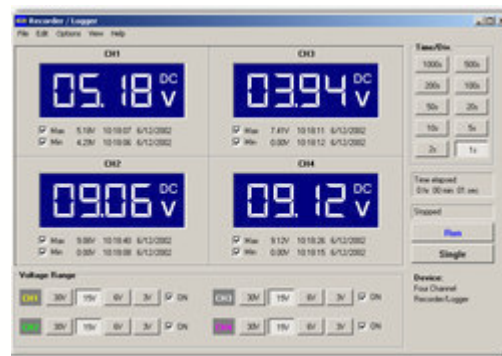




4 CHANNEL USB RECORDER / LOGGER



PCS10 / K8047



**USB driver installation
instructions**

Table of Contents

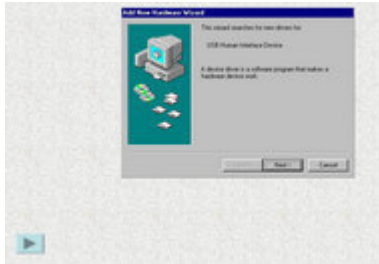
Part I English	3
1 USB driver installation	3
fig1	3
fig2	4
fig3	4
fig4	5
fig5	5
fig6	5



1 English

1.1 USB driver installation

Start by inserting the included PC-LAB2000 CD in your PC and executing the installation procedure that will install the PC-LAB2000 on your hard disk. You may already be using PC-LAB2000 with another one of our other products (PCS100,PCS500,PCG10,...). Make sure you are using Rev 1.30 or higher.



1.1.1 fig1



Use the included USB cable to link the K8047/PCS10 to your computer's USB interface connector. Click on the screen button "NEXT" to install the H.I.D. USB driver if necessary. Check if the green LED (POWER) lights

1.1.2 fig2



Click on "NEXT" again

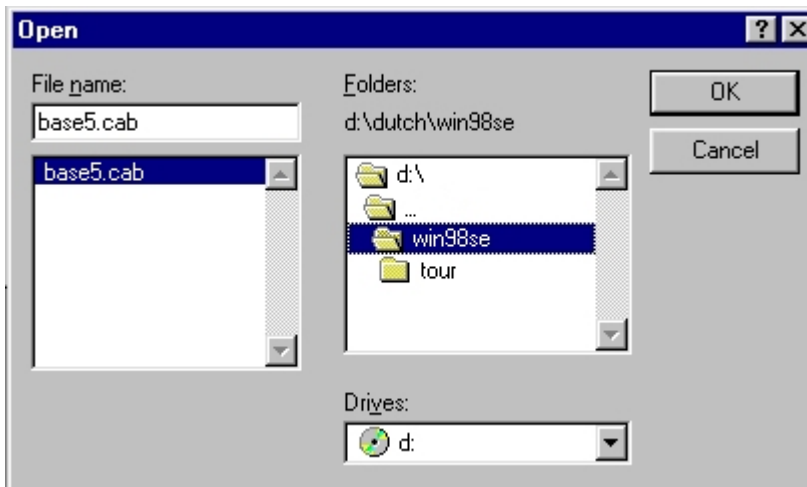
1.1.3 fig3



Indicate the location of the Windows 98 SE CD or the Windows 98 SE driver files (*.CAB)

1.1.4 fig4

Put your original Windows 98 SE CD in your CDROM drive if necessary

1.1.5 fig5

Indicate the correct location of the driver files if this is not taken care of automatically

1.1.6 fig6

The installation of the driver is successful if the next screen is displayed.
Click on "Finish"

Velleman Instruments is a division of
Velleman Components NV.
Legen Heirweg 33
9890 Gavere
Belgium

Internet site : <http://www.velleman.be>
E-mail : support@velleman.be